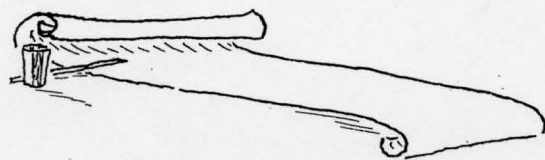


THE SPECTRUM

1932

PUBLISHED BY
THE GRADUATING CLASS
OF THE
ALEXANDRIA
HIGH SCHOOL
VOLUME XI
ALEXANDRIA, INDIANA
1932





ALLEEN ODIE WHIPPLE

President

"\$10,000 Reward" (3)
Class President (4)
G. A. A. (1), (3); Recording Secretary (3)
Thespian Club (4)
Art Editor "Spectrum" (4)

WILMER R. SHAW

Vice President

Vocational Club (1)
Hi-Y (2), (3), (4)
Class Vice President (3), (4)

CAROLYN FRANCES HIEATT

Secretary

Girl Reserves (1), (2), (3), (4); Secretary (3)
Latin Club; Treasurer (2); Vice President (3)
G. A. A. (3)
Thespian Club (4)
Basketball (1), (2), (3), (4)
Circulation Manager "Spotlite" (4)

DONALD WILLIAM UNDERWOOD

Treasurer

Hi-Y (2), (3), (4)
"Oh, Doctor!" (4)
Yell Leader (3), (4)
Class Treasurer (4)
Thespian Club Treasurer (4)
Joke Editor "Spectrum" (4)
Chorus (4)

SENIORS

In '28 the doors of Alexandria High School opened to welcome eighty-seven Freshmen-and now once again they are opened to these same students, this time to bid them farewell, for the Seniors are leaving after four years of happy association. These students have learned many lessons, some from books and many from experience, which make them better able to cope with the future and whatever it may hold. The class of '32 is the largest class to graduate from the Alexandria High School, the total enrollment at the close of the Senior year being sixty-three.

Little was accomplished during their Freshman year, partly because of the "Freshies'" apparent greenness. George Whaley, Genevieve Wood, and Marjorie Lane were the class officers this year, and Mr. Orner was the faculty advisor.

Mr. Hugh Townsend, the sponsor during the Sophomore stage, found these students more experienced. They won the tug of war again, and social events were the outstanding features of the year. Keith Fuller, Ruth Prewett, and Louise Miller served as class officers this year.

The Junior year was truly a busy one for them. The first important event was the Junior play, "\$10,000 Reward". Then came the most important happening of the year, the Junior-Senior reception, when the Juniors entertained the Seniors in the gym, which had been transformed into a rock garden. Mr. Williams was the faculty advisor this year, with Keith Fuller, Wilmer Shaw, and Louise Miller serving as class officers.

The faculty advisor for the Seniors in this last year has been Miss Hieatt, who has directed them in their important projects of publishing the SPECTRUM and in the Senior play, "Sound Your Horn!", presented on May 10. During the year the class sponsored a lyceum course and several other projects for financing the publishing of the Annual. In addition to the class officers elected to serve, Vernon Welcome, Geneva Aldridge, and Keith Fuller represented the Seniors on the Student Council.



GENEVA ALDRIDGE

Home Ec. Club (1), (2), (3), (4)
Girl Reserves (1), (2), (3), (4)
Secretary Student Council (4)

KATHRYN ARNOTT

Girl Reserves (3), (4)
Snapshot Editor "Spectrum" (4)
Glee Club (2), (3)
"Jerry of Jericho Road" (2)
"Oh, Doctor!" (4)
"\$10,000 Reward" (3)



PAUL BARKES

Latin Club (1), (2)

MARY AGNES BARTON

Girl Reserves (4)

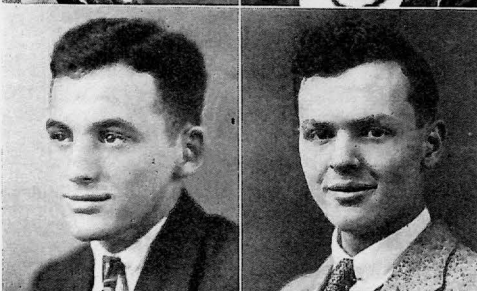


IONE MARIE BITNER

Glee Club (2)
Girl Reserves (2) (4)

EVELYN RUTH BLACK

Girl Reserves (1), (2)
Speakeasy Club (3)
Thespian Club (4)
"The Importance of Being Ernest" (4)



JIMMY BOSLEY

Track (1), (2), (3), (4)
Hi-Y (2), (3), (4)
Latin Club (2)

CARLTON CAREY

Orchestra (1), (2), (3), (4)
Band (3)
Hi-Y (4)
Speakeasy Club (3)
"High Heart" (3)
"Oh, Doctor!" (4)



DOROTHY ELNORA CARROLL

Glee Club (1), (2)
"Jerry of Jericho Road" (2)

MARY BERNICE CUNNINGHAM

Glee Club (3)
"Miss Cherryblossom" (3)
Girl Reserves (2), (3), (4)
Thespian Club (4)
G. A. A. (3)
"\$10,000 Reward" (3)
Home Ec. Club (3), (4)
Latin Club (2)

MARGARET LAVON DAVIS

Girl Reserves (1), (2), (3), (4)
Home Ec. Club (3), (4)
Basketball (2), (3)

EMMA LOUISE DURR

Girl Reserves (1), (2), (3), (4)
Home Ec. Club (2)
Class Basketball (1), (2)
Librarian (2), (3)

DOROTHY ADELINE EATON

Girl Reserves (1), (3), (4)
"\$10,000 Reward" (3)
Home Ec. Club (4)

RUTH ELIZABETH EDWARDS

French Club (2)
Girl Reserves (1), (2), (3), (4);
Treasurer (2)
G. A. A. (3)
Glee Club (1), (4)
Business Manager "Spectrum" (4)
Student Council (1)
"Oh, Doctor!" (4)

MARGARET LEONA EMMONS

Girl Reserves (2), (3), (4)
Home Ec. Club (1), (2), (3), (4)
Glee Club (1), (2), (4)
"Oh, Doctor!" (4)
"Jerry of Jericho Road" (2)

LEON ETCHISON

Band, Glee Club (1), (2), (3), (4)
"Pickles" (1)
"Jerry of Jericho Road" (2)
"Miss Cherryblossom" (3)
"Oh, Doctor!" (4)
Orchestra (2), (3), (4)
Class Basketball (1)
"\$10,000 Reward" (3)
Thespian Club (4)

ELMER EUGENE FOLAND

Hi-Y (3), (4)
Student Council (3)
Vocational Club Treasurer (2); President (3)
Varsity Basketball (2), (3), (4)
Track (2), (3)

FRANCES LOUISE FREESTONE

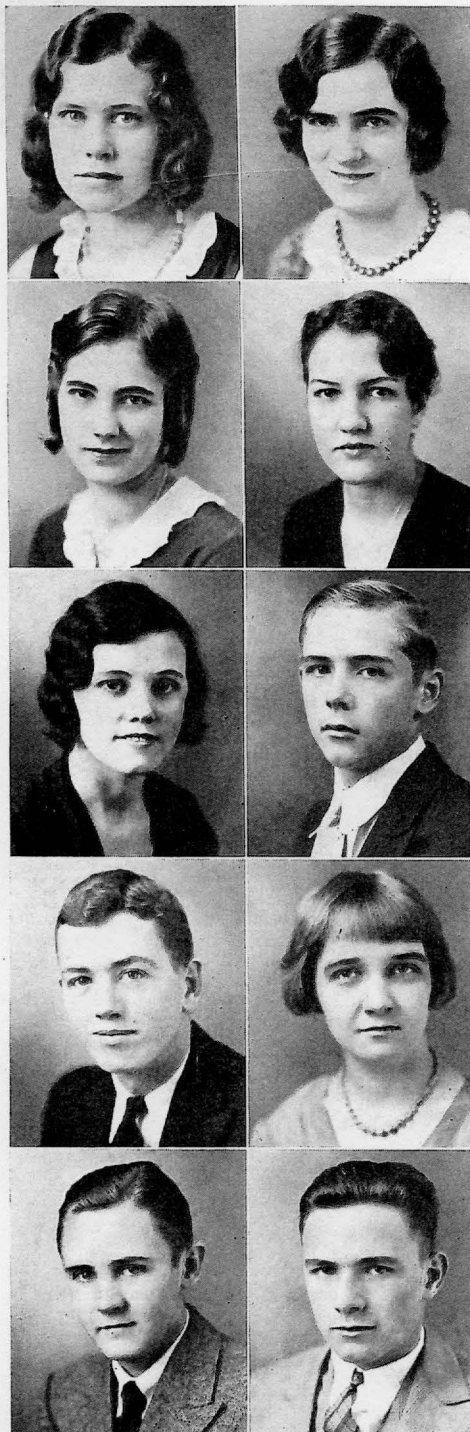
Girl Reserves (2), (3), (4)
Latin Club (2), Secretary (3)
Orchestra (3), (4)
Editor "Spotlite" (4)
Librarian (3), (4)

KEITH FULLER

Student Council (1), (4)
Class President (2), (3)
Hi-Y (1), (2), (3), (4)
"\$10,000 Reward" (3)
"Oh, Doctor!" (4)
Glee Club (4)
"The Importance of Being Ernest" (4)

GEORGE GAITHER

Vocational Club (3), (4)





MILDRED LUCILLE GIRTTON

Girl Reserves (1); Secretary (2);
President (3), (4)
Thespian Club President (4)
"Blind Dates" (2)
"\$10,000 Reward" (3)
Calendar Editor "Spectrum" (4)
Exchange Editor "Spotlite" (4)

JOHN W. GOSNELL

Vocational Club (1)
Agriculture Basketball (1)
Varsity Basketball (3), (4)
Inter-Class Basketball (2), (3), (4)
Baseball (4)



FLOYD GUSTIN

Vocational Club (1), (2), (3), (4)
Vocational Basketball (3), (4)

HERMAN A. HORN

Varsity Basketball (1), (2), (3), (4)
Class Basketball (1), (2), (3), (4)
Hi-Y (4)

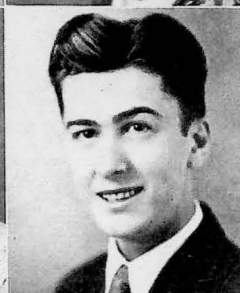


JAMES HUGHES

Hi-Y (4)
Speakeasy Club (3)
Alumni Editor "Spectrum" (4)
Assistant Business Manager "Spotlite" (4)

MABEL RUTH JOHNSON

Home Ec. Club (2), (3); Historian (4)
Girl Reserves (4)
Literary Editor "Spectrum" (4)



CATHERINE ELIZABETH JONES

Latin Club (1)
G. A. A. (3)

PAUL F. JURT

Muncie High (1), (2), (3)
History Club (2)
Health Service Club (3)



SAMUEL MICHEAL KLEM

Shop (2)
Speakeasy Club (3)
Assistant Sports Editor "Spotlite" (4)

MARJORIE D. LANE

Glee Club (1)
Girl Reserves (1), (2), (3), (4)
"\$10,000 Reward" (3)
Class Secretary-Treasurer (1)

EARL L. LEWIS

Hi-Y (1), (2), (3), (4)
Assistant Snapshot Editor "Spectrum" (4)
Student Council (3)
Class Basketball (3), (4)

KEITH McCLEAD

Vocational Club (1), (2), (3), (4)
Vocational Basketball (1), (2), (3), (4)
Future Farmers of America (4)
Class Basketball (4)

CAROLYN MASON

Girl Reserves (3), (4)
French Club (2)
Staff Typist "Spectrum" (4)

LILLIE RUTH MILLER

Home Ec. Club (3), (4)

MARY LOUISE MILLER

Girl Reserves (1), (2), (3), (4);
Treasurer (4)
Latin Club Vice President (2)
Editor-in-Chief "Spectrum" (4)
Librarian (2)
Class Secretary-Treasurer (2), (3)
Thespian Club (4)
"\$10,000 Reward" (3)
G. A. A. (3)

RUBY MONTGOMERY

Camera Club (Elwood) (1)
Latin Student Council (Elwood) (1)
Librarian (4)
Latin Club (1), (2)
G. A. A. (3)

WILLIS R. MONTGOMERY

Hi-Y (1), (2), (3), (4); President (4)
Latin Club (2), (3)
Glee Club (1), (2), (3), (4)

HILDRED NOBLE

Girl Reserves (1), (2), (3), (4)
G. A. A. (2)
Glee Club (1), (2)
"Jerry of Jericho Road" (2)
Speakeasy Club (2)

WILLIAM OLIVER

Speakeasy Club (3)
Class Basketball (1)
Thespian Club (4)
Glee Club (4)
"\$10,000 Reward" (3)
"Oh, Doctor!" (4)
"The Importance of Being Ernest" (4)

CATHERINE PHEOBE PAINTER

Girl Reserves (1), (2), (3), (4)
Glee Club (1), (2)
Home Ec. Club (4)
French Club (2)
"Spectrum" Typist (4)





RUTH PREWETT

Latin Club (1), (2)
Glee Club (1)
Class Vice President (2)

DAN RICHARDSON

RICHARD ROSENBERGER

Band (1), (2)
Orchestra (2)
Speakeasy Club (3)
Thespian Club (4)
Hi-Y Club (4)
Glee Club (4)
Sports Editor "Spotlite" (4)
Athletic Editor "Spectrum" (4)

ELEANOR SHERMAN

G. A. A. (3)
French Club (2)
Girl Reserves (1), (2), (3), (4)
Glee Club (1), (2), (4)
"\$10,000 Reward" (3)
"The Importance of Being Ernest" (4)
Alumni Editor "Spectrum" (4)
"Oh, Doctor!" (4)
Thespian Club (4)
Orchestra (1), (2), (3), (4)
Student Council (3)

KATHLEEN ANN SMITH

Girl Reserves (2), (3), (4)
Glee Club (1)
Home Ec. Club (2), (3), (4)
Latin Club News Reporter (2), (3)
Secretary G. A. A. (3)
Speakeasy Club (3)
Thespian Club (4)
"Blind Dates" (2)
"\$10,000 Reward" (3)
"The Importance of Being Ernest" (4)
Basketball (1), (2), (3)

MARGUERITE ELINOR SMITH

Girl Reserves (1), (2), (4)
Glee Club (1), (4)
"\$10,000 Reward" (3)
Thespian Club (4)
"The Importance of Being Ernest" (4)
Literary Editor "Spectrum" (4)
Basketball (1), (2)
French Club (2)
"Oh, Doctor!" (4)
Assistant Advertising Manager "Spotlite"

HOWARD SWINDELL

Vocational Club (1), (2), (3), (4)
Future Farmers of America (4)
Vocational Basketball (1), (2), (3), (4)
Class Basketball (1)

MARY FRANCES SWINDELL

Girl Reserves (2), (3), (4)
Chorus (4)
Librarian (4)
"Oh, Doctor!" (4)
Home Ec. Club (1); Vice President (2)
Secretary-Treasurer 3; President (4)

EDRIE TAYLOR

Girl Reserves (2), (3), (4)
Latin Club (2), (3)
G. A. A. (3)
Home Ec. Club (2), (3)

CLARENCE SMITH (picture omitted)

Special Art Work

RALPH WARREN THURSTON

Vocational Club (1), (2), (3), (4)
Vocational Basketball (1), (3), (4)
Future Farmers of America (4)

BERNICE LUCILLE WALKER

Girl Reserves (1), (2), (4)
Glee Club (1), (2)
French Club (2)

HELEN LOUISE WASHBURN

Home Ec. Club (3)
Glee Club (3), (4)
Girl Reserves (4)
"Miss Cherryblossom" (3)
"Oh, Doctor!" (4)

DORIS I. WATCHER

Assistant Joke Editor "Spectrum" (4)
Glee Club (1), (2), (3), (4)
Girl Reserves (1), (2), (3); Vice President (4)
Thespian Club (4)
A. S. M. Vice President (4)
G. A. A. (3)
"\$10,000 Reward" (3)

CHARLES WELBORN

Elwood High (1), (2)
Business Manager "Spectrum" (4)
Hi-Y (4)
Chorus (4)

VERNON WELCOME

Class Basketball (1), (2), (3), (4)
Varsity Basketball (1), (2), (3), (4)
Hi-Y (3); Vice President (4)
Student Council Vice President (4)

EDGAR NORMAN WELLS

Hi-Y (1), (2), (3); Treasurer (4)
Inter-Class Basketball (1), (2), (3), (4)
Baseball (4)
Varsity Basketball (2), (3), (4)
Speakeasy Club (3)
Assistant Sports Editor "Spotlite" (4)
Track (3), (4)

GEORGE EDWARD WHALEY

Varsity Basketball (1), (2), (3), (4)
Hi-Y (1), (2), (3), (4)
Chorus (4)
Business Manager "Spotlite" (4)
Class President (1)
Track (4)
Inter-Class Basketball (2), (3), (4)

WOODROW WILSON WHETSEL

Vocational Basketball (1), (2), (3)
Speakeasy Club (3)
Sports Editor "Spotlite" (4)
Hi-Y (4)
Vocational Club (1), (2), (3), (4)

