

#### GENE TROWBRIDGE

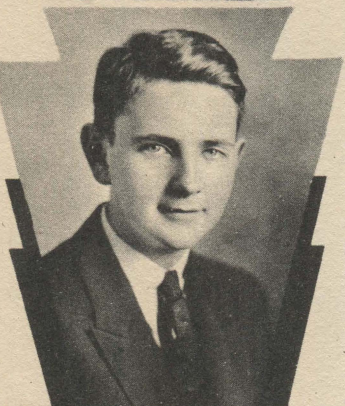
Latin Club 1  
Class president 4  
Class play 3

Gene is our class president and we're proud of it. Every thing he wants done, he doesn't rest until it's completed. The reviving of our Student Council is the result of no other person than Gene.

#### GENEVIEVE BAKER

Glee Club 1-2-3-4  
Orchestra 3-4  
Girl Reserve 1-2-3-4  
Latin Club 1-2  
Sunshine Society 1-2  
4-H Club 1-2

"Jenie" is a living model straight from Paris.



#### JUNIOR KIVETT

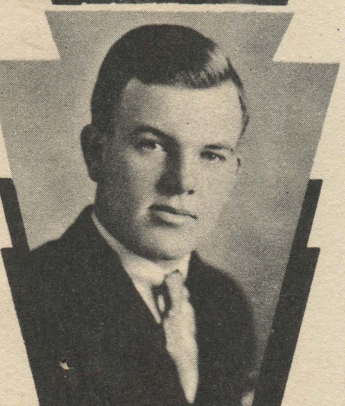
Glee Club 3-4  
Band 1-2-3-4  
Latin Club 1-2-3  
Hi-Y 4  
Dramatic Club 2  
"Skidding" 3  
Artesian Staff 4

Kivett is our business manager and he has handled the funds as economically as possible.

#### PHYLLIS HENDRIX

Glee Club 1  
Sunshine Society 1  
Latin Club 1-2-3-4  
Co-Editor Artesian Herald 4  
Annual Staff 4

We can't say anything about Phyllis without mentioning "Danny", her favorite subject.



#### ALLEN MILLS

Latin Club 1-2-3  
Editor-in-Chief of Artesian  
Class secretary 2  
Class vice-president

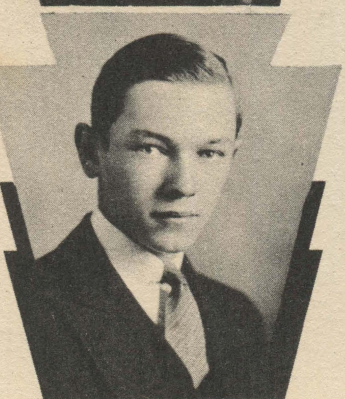
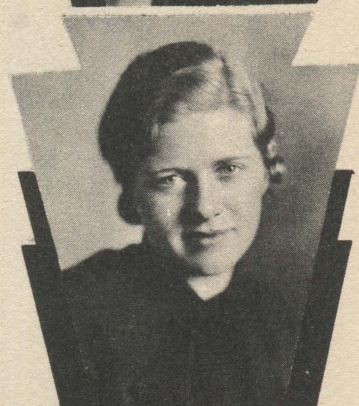
Allen is the dependable boy of our class. If anything is to be done, he can, and will, always do it. Miss Stevens will be lost without him.

#### ELIZABETH MOORE

Varsity Debating 4  
Orchestra 1-2-3-4  
Latin Club 1-2-3-4  
Operetta Cast 3-4  
Musicae Latinae 1-2  
Uke Club 3

Girls' Glee Club 1-2-3-4

"Lib" is the most popular girl in school. Her riotous laugh will be missed.



#### JOHN SMYTH

Hi-Y 2-3-4  
Varsity Debating 3  
Latin Club 1-2  
Annual Staff 4  
Science Club 1

John is an excellent student in art and also a top notcher in mechanical drawing. The seniors owe a vote of thanks to him for the art in the annual.

#### CHARLES KENNEDY

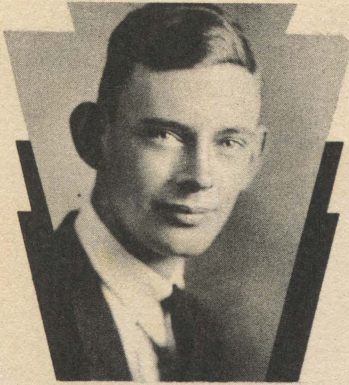
Debating 3  
Latin Club 1-2-3-4  
Operetta cast 3-4  
Dramatic Club Vice-Pres. 2-3  
Glee Club 2-3-4

"Take My Advice" 2

"Chuck" is one of the senior editors.







#### CHESTER SECREST

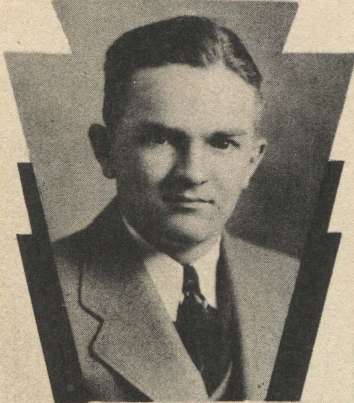
Band 1-2-3-4  
Orchestra 2-3-4  
German Band 3-4  
Special Orchestra 3-4

"Chet" is noted for his ability to play a sousaphone. What the band will do without him we don't know. He has a weird sense of humor, but can enjoy a good joke.

#### HARRISON BAILEY

Football 1-2  
Interclass B. B. 1-2

Harrison's fame flew out the window when football was abolished from the school. If he'd had his chance, he'd sure have taken the honors on the gridiron.



#### KENNETH WATSON

Football 1-2  
Varsity Basketball 3-4  
Class president 3  
Glee Club 2  
Latin Club 1-2-3-4  
Hi-Y 3-4

"Buck" is very popular with the girls which accounts for his breaking training once in a while, but we'll overlook it.

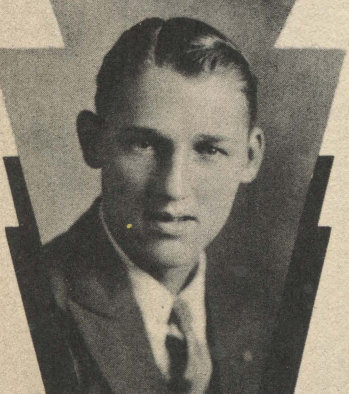
#### PHYLLIS ZENOR

Latin Club 1-2-3-4  
Musicae Latinae 1-2  
President 2  
Dramatic Club 2-3  
Girl Reserve 3  
Junior Class Play

"Phil" is small but mighty. Her favorite fruit is "dates."



*Phyllis Zenor*



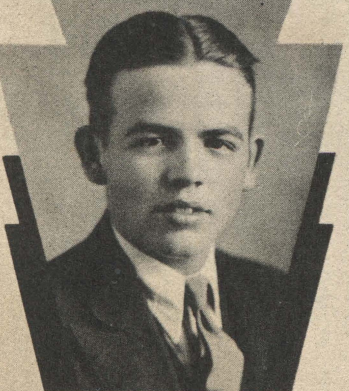
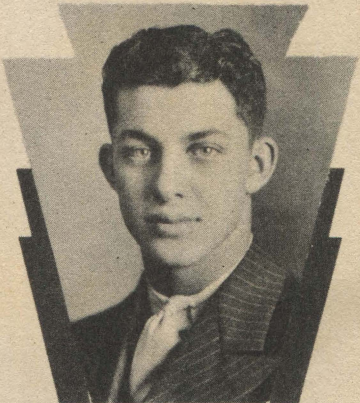
#### CONRAD ASHER

"Connie" is one boy who can tell you how cold it got this winter for he delivered papers around 4 o'clock in the morning. He's one of Mr. Colvin's helpers and is always in the bookstore from 8:00 to 8:25 and also at noon. With a record like this he ought to be a great success.

#### BOB DALE

Varsity Basketball 1-2-3-4  
Football 1  
Latin Club 1-2-3-4  
Class president 2  
Student Council 2  
Hi-Y 3-4

One of the coolest players basketball has seen and what a pair Bob and "Buck" make.



#### DENZEL DENNY

Denzel's nickname is "Bullet". He is inclined to stay away from crowds, but his joyous "happy-go-lucky" ways have made him many friends. His ever rosy cheeks prove that he is healthy. He can be seen hanging out at the filling station across the way frequently.

#### FAYE SMITH

Ellettsville High School 1-2  
Interclass B. B. 3

Faye came to our school rather late, but what she did when she arrived is worth "harping" about. She has gorgeous, big blue eyes. There should be a vote of thanks given to her by the senior class, for she sure sold "Artesians."





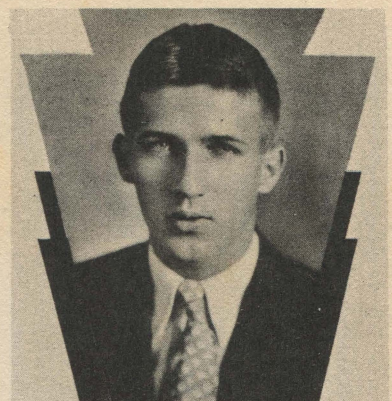


**JOSEPHINE BALES**  
Latin Club 1-2-3  
4-H Club 1-2-3  
Sunshine Society 1

"Jo" is very dependable and very conscientious. She is cool, steady and her actions are done with careful deliberation. She performs all her tasks to perfection and can be trusted.

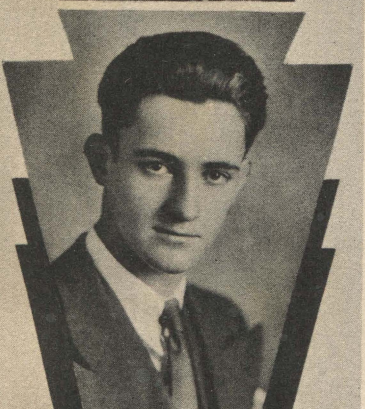
**ROBERT RICHARDSON**  
Latin Club 4

Boys' Glee Club 3-4  
"Bob" is the comedian of our class. Without his puns and "stale" jokes, M. H. S. would have been buried long ago. He is congenial, liked by all (especially "Dave"), and is a first class "gob."



**MARION GWYNN**  
"Hoggie" quit school near the last of the year. He seemed to think that there was more in helping his "dad" haul coal. Hoggie's good humor will be missed. We were sorry to see him go.

**LOTTIE WRATTEN**  
Lottie comes to us from the country. She has small penetrating eyes that can detect your character at a glance. She is the home-loving type and is very neat. Her outstanding trait is that no gossip passes from her lips. This alone makes her adored by her friends.

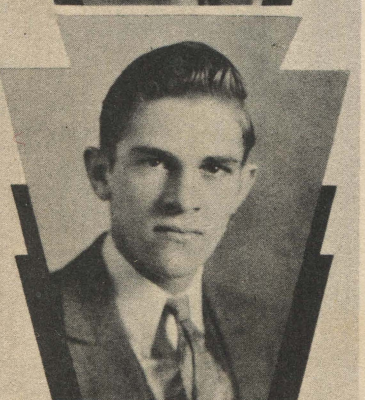


**EUGENE FOWLER**  
Band 3-4  
Orchestra 3-4  
Agricultural Club 3  
Special Orchestra 4

Eugene went to Washington High School at Indianapolis in his freshman and sophomore years. When you want somebody to give you a speech on philosophy, here's your man.

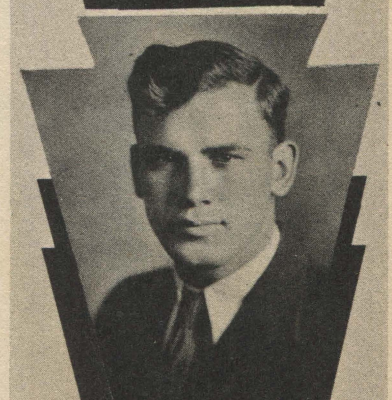
**TWANETTE McDANIEL**  
Latin Club 1

Sunshine Society 2  
Twanette will long be remembered for her ever cheerful smile. Even on exam day her smile would be bigger and broader than ever. "Twanny" will make some home lover a model wife.



**BASIL JOHNSON**  
Basil is the Boris Karloff of the senior class. His art work is outstanding. Basil will probably be an artist who'll win great renown for his caricatures. He is reserved and has the essential things that will lead him up the ladder of success.

**RALPH SAVAGE**  
Ralph is a very good natured boy, and has many friends. He will be missed in the industrial department next year, because he is one of Mr. Wadsworth's most dependable students. His brother is following in his footsteps.







MARY MARGARET  
SCHOONOVER

4-H Club 1-2-3-4  
Glee Club 1-2-3-4  
Orchestra 1-2-3-4  
Sunshine Society 1  
Artesian Staff 4  
Girl Reserves 3  
Latin Club 1-2

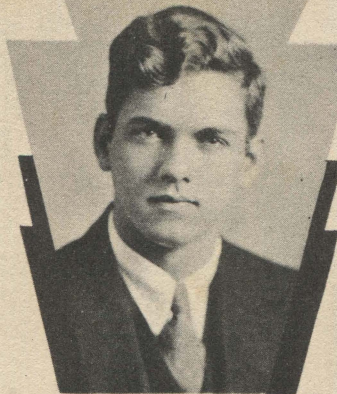
Mary is an excellent seamstress. The 4-H Club won't be the same without her.

FOREST ABRELL

Latin Club 1-2-3-4  
Musicae Latinae 1-2  
Uke Club 3

Annual Staff 4  
Artesian Herald Co-Editor 4  
"Skidding" 3

"Leslie" is one of these Brooklyn Mae Wests. The road has had to be repaired because of the use of the two 'docs.'



MILES HULL

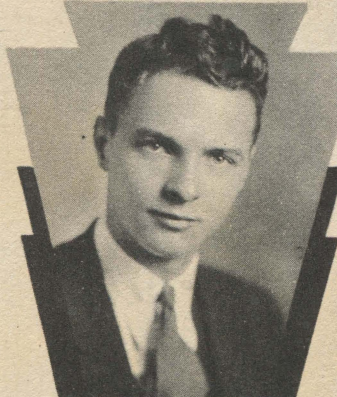
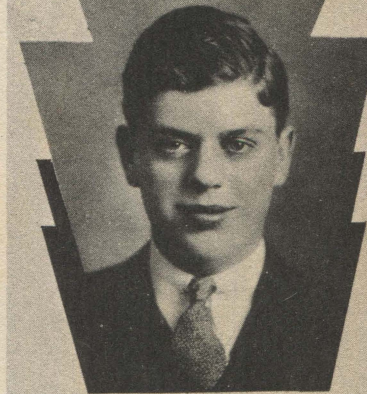
Glee Club 3-4  
Band 1-2-3-4  
Orchestra 2-3-4

"Tiddly" is one of Mr. Spaulding's musicians. You can always hear him and his drum above the whispers of the third period assembly.

BILLY CURE

Band 1-2-3-4  
Latin Club 1-3

Slow but sure is Bill. Doubly sure in history of all kinds. Just try to make a higher grade in history tests than he docs. He's also one of Miss Rose's superior trig students but a little careless. Tut-Tut.



RANDOLPH SPRUNGER

Band 2-3-4  
Glee Club 3-4  
Operetta Cast 4  
Dramatic Club 3  
Special Orchestra 3-4  
Latin Club 1

Randy is a first class razzler. His remarks are illuminating—gas usually is. We all like him.

THEDA FLETCHER

Sunshine Society

G. A. A.

Dramatic Club

Although Theda has not been in the spot light of the school she will long be remembered for her quietness, for this trait of character is always appreciated.



DOROTHY GRIZZLE

Uke 3  
Sunshine Society 2  
Glee Club 2-3-4  
Dramatic 3  
Latin Club 2-4  
Operetta 2-3-4

Another "Dot" in the class, but she's fallen for Lyman so hard, school just exists.

RUTH WATSON

S. S. S. 1-2-3

G. A. A. 1-2-3

4-H 1

Ruth favors Blomington when it comes to the "mails." She usually has more letters from California, Bloomington, etc., than all the other girls in school. She has a "generous" laugh, but it comes from the heart.





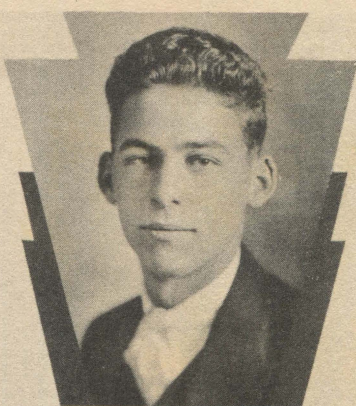


MARGUERITE ROBINSON  
Latin Club 1-2  
Glee Club 1  
Operetta 1

Marguerite is looked on with envious eyes by D. Fesler and a few other students who live "miles" from the school. She is rather bashful but will get along with her man.

JACK JOHNSTON  
Glee Club 4

Jack is the "Schnozzle" of the senior class. If the movies want a double for Jimmy Durante they can find one in Martinsville. When a car goes careening around a corner and some boy yells, "hotcha, cha cha cha," it has to be Jack.

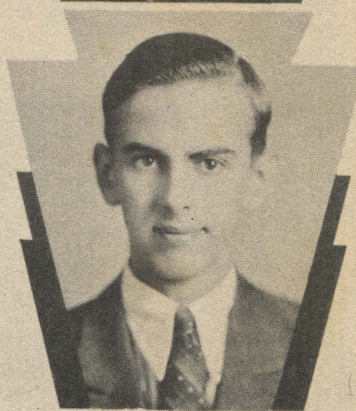


WANZA SAVAGE

Wanza is a perfect lady. Profane language, heated retorts, and sarcasm were never made for her. She is cheerful, always smiling and liked by everyone. She has a complexion without a blemish and is envied by all the girls because of this.

ROBERT ZARING  
Latin Club 1-2-3  
Glee Club 2-3-4  
Junior class play 3  
Varsity Debating 2  
Student Council 4  
Operetta cast 4

"Bob" can give and take a good joke. His Waterloo is Miss Rose's trig class.



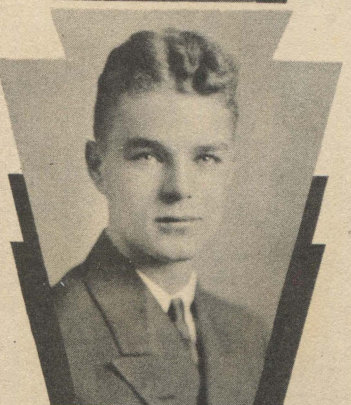
MARJORIE LONG

Girl Reserves 3

"Marge" is one girl who makes the sphinx seem like a Lee Tracy. Her placid, easy going ways are not easily ruffled. Her manner is unobtrusive, her habits temperate, and her tastes, modest. This is what it takes to make good.

ELIZABETH BRADY

"Lib" is small, blonde, good-natured, and a true friend to everyone. She is always around the corner from where Imogene Hicks is. "Lib" is a girl who goes in for sports and is good in everything she does.



EMMETT PHELPS

Basketball 1-2-3-4

Varsity 3-4

Latin Club 1-2

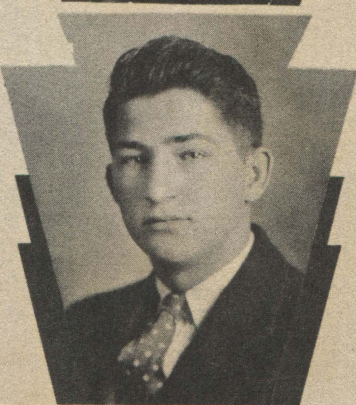
Glee Club 3

Operetta 3

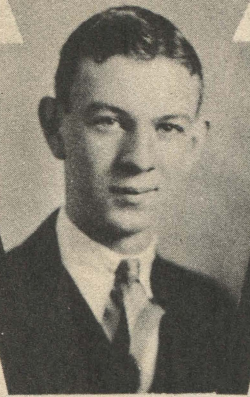
Emmett (ladies' man) Phelps would make somebody a wonderful blonde hero. He must have been cut out for a "Gentleman of Leisure." And what a form in tennis!

ROBERT KELLER

"Bob" says he is a faithful Democrat, but he can be seen at all the Republican dances thoroughly enjoying himself. No certain girl's name can be "pinned" on Bob for he changes his tastes about every week. Bob has a smile for everyone.







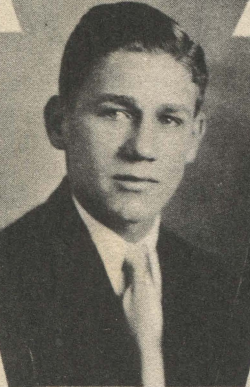
**DANIEL WOODEN**

Basketball 2-3  
Latin Club 1-2-3

"Danny" is the apple of Phyllis's eye and the kid brother of no other than that famous Johnny Wooden. Dan's laugh is a novelty, and the mischievous look in his eyes will probably prove him guilty of disregarding his studies for more interesting subjects.

**JOHN HEWITT**

John has the honor of being the one in the class that can give book reports and thoroughly entertain the class, as well as himself, while doing so. His laugh indicates he's enjoying life.



**BRUCE PRIEST**

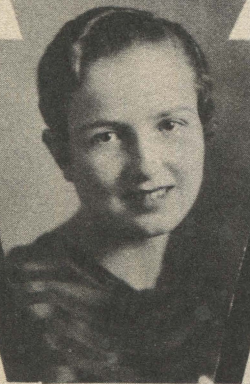
Basketball 1-2-3  
Art Club 4  
Annual Staff 4

Bruce is one of Hochstetler's "crack drawers." He and Lucille Quackenbush are thicker than molasses in January and do we envy him! He is responsible for much of the work on the senior pictures.

**GENEVA CARMICHAEL**

Sunshine Society 1  
Girls' Athletic Association 1-2  
Glee Club 3-4

"Gee" has quite a crush on Alva. Fame has not set her in the spot light, but her snappy eyes show she has something behind the placid severities. Singing is a trait Geneva possesses that runs in their family.



**DOROTHY FESLER**

Dramatic Club 2  
Latin Club 1-2-3  
Uke Club 3

Junior class play

Body by Fisher. "Dot" may not be skinny but that doesn't worry her. Her spells of laughter gone will make the school very dull.

**MARION HARDING**

Marion is one of the very few girls that has taken four years of history. Her chief interest, however, is centered in the home economics department. She is very much like her sister, when it comes to deciding which is which.



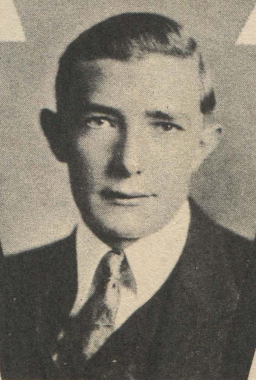
**MARTHA DEVORE**

Martha is a very serious thinker. In everything she does she thinks it through first before acting. She rides to school in a gray "chivy" and comes from east of town. Her auburn hair makes her attractive, and she is very good natured.

**HUBERT MCKEE**

Latin Club 1-2

Hubert is very thoughtful and practical. He uses good judgment and makes it a point to be fair and square at all times. This fact is appreciated by his pals, of whom Hubert has many. We wish you the best of luck, Hubert.







**LORAN SCOTT**

Glee Club 1-2-3-4  
Latin Club 1-2  
Skidding 3

"Dorney" is a bit egotistical, but that's far better than having an inferiority complex.

**HAZEL DURHAM**

Interclass B. B. 1-2-3  
G. A. A. 1-2-3  
Sunshine Society 1-2

Hazel is an athlete. Her willingness to do anything that is asked of her is her outstanding characteristic. She has a sweet disposition that wins her many friends. She is easy to confide in.



**EUGENE SWOPE**

Latin Club 1-2-3-4  
Glee Club 3-4

Known for his big writing. When he gets done putting his Trig on Miss Rose's blackboard there's no room for anyone else's trig. He seldom has his trig lesson, but he always manages to bluff in some way, which is really something in Miss Rose's room.

**ALBERTA PAYTON**

G. A. A. 1-2  
Sunshine Society 1-2  
4-H Club 2  
Annual Staff 4

Alberta is a genius at the piano. She is an original poetess, and a good typist.



**EVELYN JOHNSON**

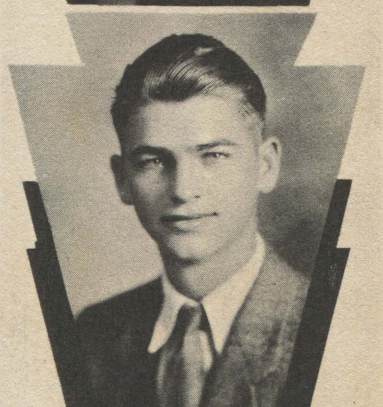
4-H Club 1-2-3-4

Evelyn is a real friend. There could be no better. She doesn't go in for art like her brother but for home economics. She isn't so quiet as some believe, for she has adapted a public "squeaking."

**GARNET WILLIAMS**

Latin Club 1

Garnet is a "Brooklynite." He's another gang leader who has his "way" on the school bus. If anything is ever missing from the bus (carburetor, seats, bolts, etc.), Garnet usually knows where they are. His eyes always have a gay look in them.



**KATHLEEN WILEY**

Girl Reserve 2-3-4  
Sunshine Society 1  
Artesian Herald Staff

"Kack" is another good typist. She is the mainstay at the jail. She was not put in by the sheriff for an offense, but to serve the prisoners their bread and water.

**BEULAH DAVIS**

Skidding 3  
Sunshine Society 1-2  
Dramatic Club 3  
Glee Club 1-2  
4-H Club 1-2  
Clog Class 1-2

"Dave" is a natural born cut up and likes everybody. Ditto, et cetera, so forth, et al.







**SURRELDA JONES**  
Surrelda is an ideal girl. She has looks, clothes disposition, and everything. Besides this she is studious. A girl like this is very hard to find for an "ideal" girl is usually never ideal in her studies. However, Surrelda is.

**MARGARET YOUNGEN**  
Latin Club 1-2-3-4  
Musicae Latinae 2  
Uke Club 3  
Sunshine Society 1  
Girl Reserve 3

"Peg" is gracious in manner, amiable, and very generous. She has a happy outlook on the world—especially the basketball world.

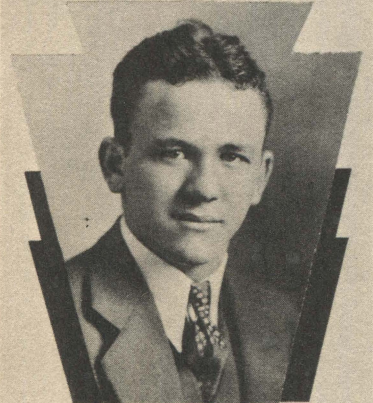
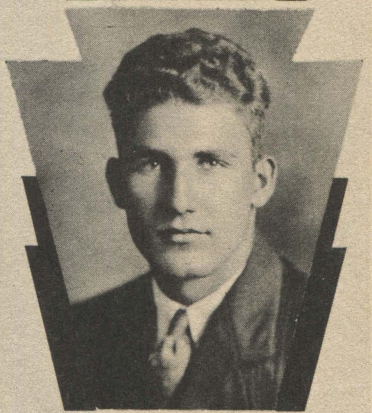


**MARY ELIZABETH BENNET**  
Latin Club 2  
Sunshine Society 1-2

Mary "Ib" left us and went to Bloomington for a while. When she returned everyone was glad to have her back.

**LORAN McKINLEY**  
Latin Club 1-2  
Basketball 1-2  
Hi-Y 4

Loran hails from that little city where the curfew rings, Brooklyn. He's the ring leader of all the trouble on the school bus. Don't ride across a river with him or you'll be minus a hat.



**HERMAN THACKER**  
Football 1-2  
Basketball 2-3-4  
Glee Club 3  
Hi-Y 3-4

"Cozy" is an all around athlete. He lives for basketball and a black haired girl on top of the hill. "Cozy" will long be remembered for taking charge of his little ward, Emmett.

**MARGARET HAMILTON**  
Shelbyville  
Sunshine Society 1-2  
Latin Club 2

"Connie" has the honor to be the only senior girl working in the office. She's one of the few girls that kept their hair long. She's well liked by everybody.



**IMOGENE HICKS**  
Latin Club 1-2  
G. A. A. 1-2-3  
Glee Club 1-2-3  
Intramural B. B. 1-2-3  
Orchestra 1-2-3-4

"Imy" so called by her friends, can reach the lowest depths with the sounds emitted from her overgrown violin. She was also "Typing Sue."

**ISABELLE BAUGH**  
Orchestra 2-3-4  
G. A. A. 1-2-3  
Latin Club 2-4  
Student Council 4  
Interclass B. B. 1-2  
Musicae Latinae 2  
Sunshine Society 1

"Izy" will be missed by the orchestra for she could play the bass fiddle.



*Isabelle Baugh*





# JEANADELLE RUSSELL

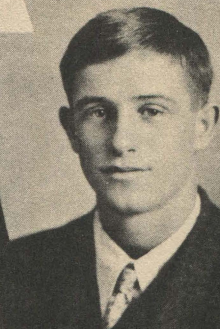
Latin Club 1-2-3  
Orchestra 1-2-3-4  
Girl Reserves 3  
4-H Club 1  
Sunshine 1  
Artesian Staff 4

"Jean" is one of the shy young girls of the senior class. She is a violinist with brown hair and brown eyes.

# RALPH KIRK

Agricultural Club 2-3  
4-H Club 1-2-3

A sturdy son of terra firma. Maybe you haven't heard much about Ralph but that's just his way. He works silently toward his goal as an efficient up-to-date agriculturalist.



# LEONARD SHAW

"Shaswich" is a rather weird nickname but better than none to say the least. "Swinney" is rather small and looks more like a freshman than a senior, but you can't always go by size, for he is more popular among his friends than most seniors. He can be seen at every "shln dig" pushing his feet over the floor with all the girls clammering for the next dance with him.

# GERTRUDE THOMAS

Girls' Glee Club 1-2-3-4  
Dramatic Club 1-2-3  
Girl Reserve 3  
4-H Club 2-3-4  
Operetta 1-3-4

"Gertie" is the "girl of the Art, Music, and Journalism Departments."



# SHIRLEY RATCLIFF

4-H Club 2-3-4  
Agricultural Club 2-3

Shirley uses considerable forethought and is very careful and prudent in his actions, which causes him to be self-contained and somewhat domineering. He should amount to something some day.

# EUNICE HODGES

Eunice is the "brain trust" of the school. Her average for all four years of work is 97.25 per cent. What we could say would probably underestimate her, so we'll not attempt to characterize her. We just wish her luck.



# CARL BROWN

Carl drives a Ford which is recognized all over school. He isn't heard from much because he hasn't done anything unusual or wrong. He's easy going and does everything he can for a friend. He's well liked around school.

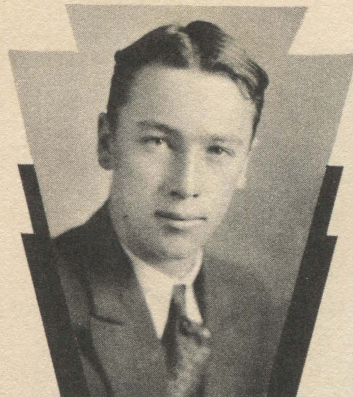
# MABEL REYNOLDS

Latin Club 1  
Artesian Herald Staff 3  
Glee Club 1  
Sunshine Society 1-2  
Operetta 1

Mabel is one of our "blondes" in the school. She is an advanced typing student and one of the coming stenographers.







# PAUL HACKER

Hi-Y 4

Paul is a nice, jolly fellow and is almost always on the honor roll. He has been outstanding in math for four years. He is very dependable and performs all tasks to the best of his ability, regardless of the detail and patience required.

## CHARLOTTE ERVIN

Musicae Latinae 1-2

4-H Club 1

Latin Club 1

Annual Staff 4

"Sharkey" can play the keyboard of a typewriter faster than Paderewski can play the piano, and that's really something! Charlotte is one of Mr. Colvin's dependables.



## INEZ MARTINDALE

Artesian Herald Staff 3

Sunshine Society 1-2

Glee Club 1

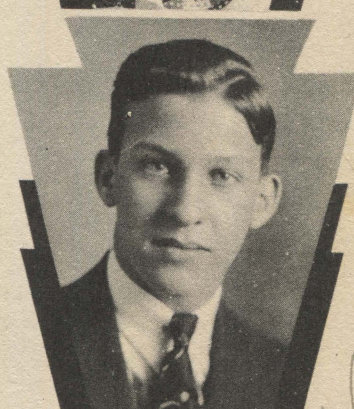
4-H Club 1

Operetta 1

Inez is seen frequently with Lloyd St. John, a student in the earlier days of the school. Her chum is Ruth Watson. She is one of the many blondes of the class.

## RAYMOND COLLIER

Raymond is one who is very industrious. Although he does excellent work and is good in everything he does, you do not hear from him much. He's silent when it comes to giving opinions, but when there's work to be done, Raymond is nearly always the one who does it.



## MILDRED BOTHWELL

Sunshine Society 1-2-3

"Mid" seems to have her future already planned. She has beautiful brown, curly hair. And is almost a twin to her sister, Marie.

## BOB GARDNER

Dramatic Club 2

Latin Club 4

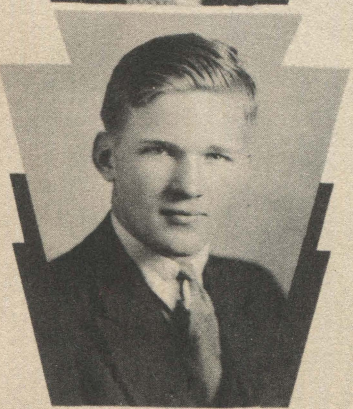
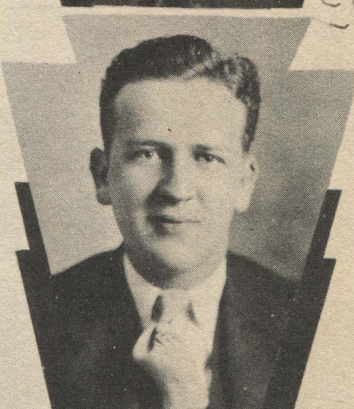
Operetta Cast 3

Lead 4

Glee Club 1-2-3-4

President of Glee Club 4

Bob is quite a crooner and has all the sex appeal of Bing Crosby. Some day NBC will probably hear of him and give him a big term contract.



## IRVIN McFARLAND

Band 1-3-4

German Band 3-4

Orchestra 3

Latin Club 1-2

Hi-Y 2-3-4

Football 1-2

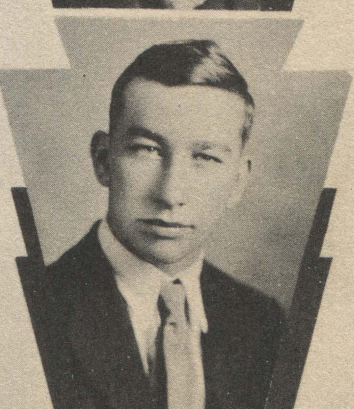
Student Council 4

"Mick" loves to argue on any subject; just give him a loop hole and he's off.

## STEPHEN FLEENER

Hi-Y 2-3-4

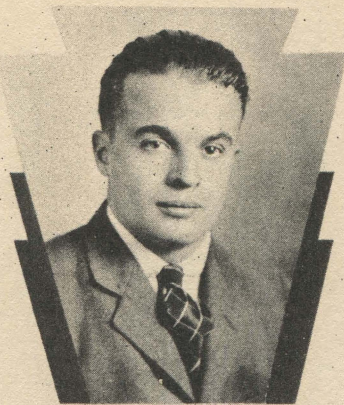
Stephen is a good drawer but prefers to read wild west stories to drawing. He is frequently caught reading wild west stories in the study hall and over at the shop. Maybe some day he will be another "Buffalo Bill" or Tom Mix.



Martindale  
"24"

"Raymond Collier"





**BILL GRIFFIN**

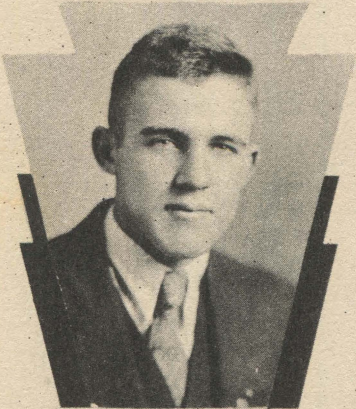
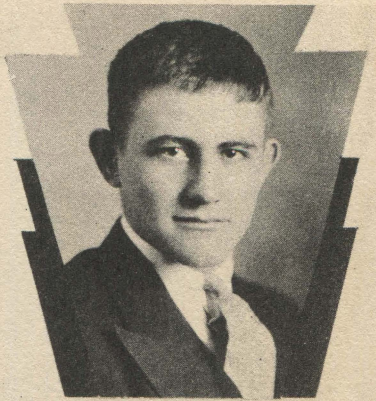
Basketball 1  
Annual Staff 4  
Artesian Staff 4  
Yell Leader 4

Now it's our turn to give a yell for Bill. He's been swamped with taking care of the circulation of the Annual. We'll sure miss him.

**WENDELL PHILLIPS**

Basketball 1-2-3-4  
Latin Club 1-2

"Windy" is "Peg's" hero. His chief sport is breaking training rules. His nickname suits him perfectly. "Windy" is always the blow of every group he's in.



**MARVIN MAXWELL**

Hi-Y 3-4  
Basketball 2-3-4  
Varsity 4  
Agriculture Club 2-3  
Vice-President 3  
4-H Club 1-2-3

Marvin has the perfect physique. He didn't break training all year. That's a real accomplishment.

**MARTHA TACKITT**

Glee Club 3-4  
Musicae Latinae 1-2  
Sunshine Society 1  
Girl Reserve 3  
Latin Club 1-2-3

"Martha" chums with "Genie" Baker. Everywhere you see one, the other is bound to be around somewhere. Martha is tall and has black wavy hair.



*Martha Tackitt*



**PAULINE PARKER**

Sunshine Society 1-2

Pauline's weakness is for boys out of school. She is one of the few senior girls with hair long enough to do up. She worked for the cafeteria a few years and should be an excellent cook.

**PAUL WILLIAMS**

Basketball 1-3  
Baseball (Monrovia 1)

"Skinny Wellfed," as he is known, can always be seen wearing a red sweater. Paul furnished much of the humor at the shop. He can always be seen wherever "Bud" Shaw is. His smile, when turned on, illuminates his whole face.



**MARIE BOTHWELL**

Musicae 2  
Latin Club 2-3-4  
Sunshine Society 1-2-3

Marie is popular enough to have boys fight over her. After a long struggle with his brother, Dick Keller won her heart. They can be seen strolling down the street every noon arm in arm.

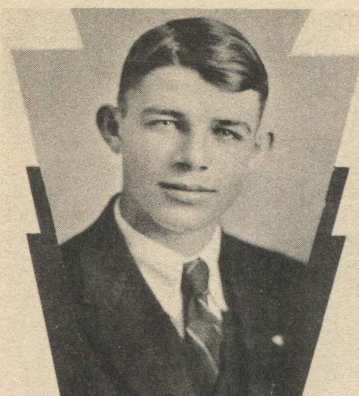
**ENOLA McCORMICK**

Glee Club 1-2-3-4  
Vice-President 4  
Sunshine Society 1  
Dramatic Club 3  
Artesian Staff 4  
Operetta 2-3-4

"Shine" has fallen hard for Beasley, no wonder. She's always in a good humor.



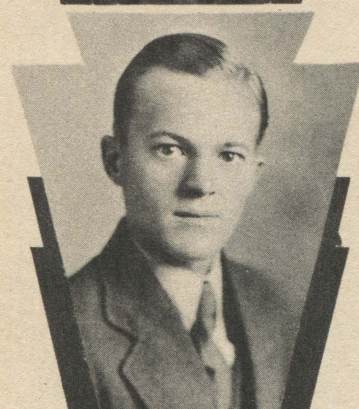




**HERMAN KOONS**  
Herman leans to agriculture. He has won many prizes on bird study. If you want an authority on birds, see him. Herman really comes into the limelight when it comes to agriculture. He is one of Mr. Calvin's best students and will be a noted toiler of terra firma some day.

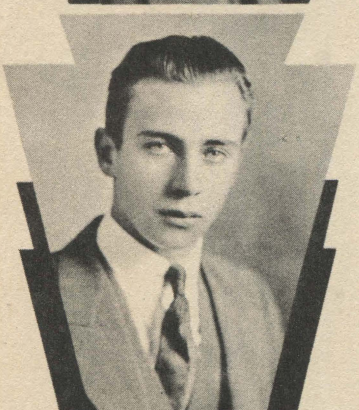
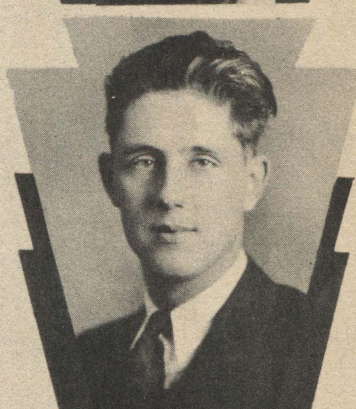
**BESSIE FERGUSON**  
Latin Club 1-2  
Musicae Latinae 1-2  
Sunshine Society 1-2-3  
4-H Club 1-2-3-4

Another girl who probably has her future already planned. Good luck!



**JEAN COFFIN**  
"Jean the peanut vender" is always absent on Monday much to Miss Roses' chagrin. (We wonder why.) He's one of the lucky guys who can see the shows with no cost "per capita." He's jolly and a good sport. The school will miss him.

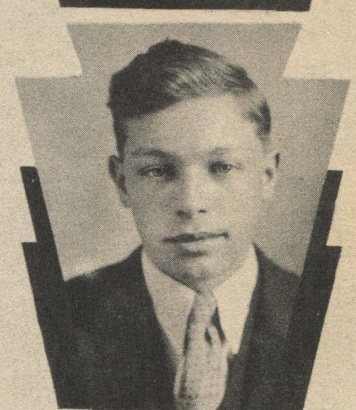
**CONRAD SELF**  
"Connie is one of the best liked students in the whole school. His cheerful nature, his everlasting smile, and his eternal good naturedness makes him a likeable chap. His chief business is driving a blue truck that gives excellent service. His motto is "Self's Certified Service Satisfies Shippers, Say I."



**DRUE GOSS**  
Hi-Y 3-4

Drue has graduated from a flivver to a Ford which is seen day and night by everybody. He's an "old dog tray" in history and is good in trig. He's a consistent honor roll student. His studious ways will carry him far.

**MELVIN FORBES**  
Melvin can be extremely clever at times. He can write plays exceptionally well. His best production of the year was "Minnie, the Moocher," which was published in an issue of the "Artesian Herald." He was very unfortunate at the first of the year when he broke his leg. This kept him from school for quite a while.



**RUBY CALDWELL**  
Ruby's abode is in Brooklyn. She is a worker in everything she attempts, and in this way she has won her way into many hearts. She inspires her associates with her industry and is a very dependable worker.

**EUGENE SCHOOLCRAFT**  
Eugene was the printer and designer of the snapshots. If you don't like the saying under them, it's partly his fault. Eugene is the kind of a person who would do anything for a "pal" He's always grinning.

