

COMMUNIQUE-1943
HOLCAD
RUSHVILLE HIGH SCHOOL

Communique No. 2

Subject: Tribute to Those in the Service.

WHEN THE DOORS of R. H. S. were opened in the fall of '42 for another school year, many familiar faces were missing in the classrooms. The students did not complain at the loss of their friends and teachers, because they realized that they were doing their part in helping Uncle Sam.

R. H. S., along with thousands of other schools all over the country, is proud that it can give to the service those who will be beneficial and will help win this treacherous global war.

We know that these former students and teachers are giving all they have. We want them to know that we are behind them one hundred per cent.

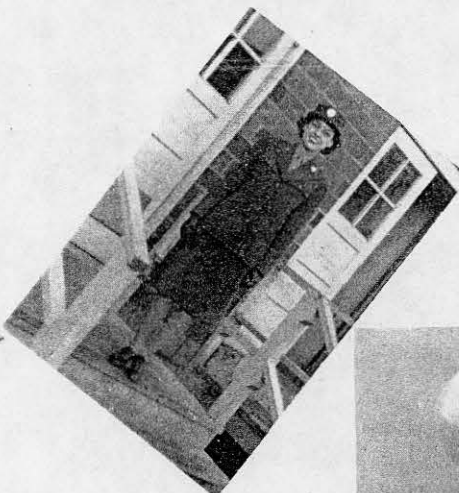
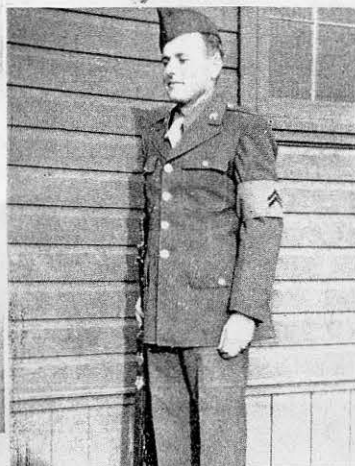
We want to pay tribute to all those who have already entered the service of our country and to those who will soon enter.

Our service roll consists of those of the Senior class of '43 who have already answered the country's call.

The photographs below are of the former teachers of R. H. S. who have entered the service.

Lt. Louis C. Darst, A.A.S., O.C.D.
Aux. Josephine Maple, W.A.A.C.
Chief Petty Officer Edgar Redman, Navy

Lt. Glenn Burgett, A.A.S.
Lt. Ruth Reese, W.A.A.C.
Major John H. Kelly, Air Corps





L. A. Lockwood, Superintendent

The General in command of all maneuvers carried on in R. H. S. Quiet but forceful and well liked by all.



C. J. Sellars
C. J. Sellars, Principal

While not teaching chemistry he's Captain, man with all the answers and part of the questions.

School Board and
Superintendent

George N. Wiltse,
Secretary

Lucille Frazee,
President

Isom Stevens,
Treasurer

L. A. Lockwood,
School Supt.



Teachers

Grace Ashby

Library, history
Sponsor — Girl Reserves
Ward-Belmont College; Indiana U.,
A.B.; Western Reserve U.; B.S. in li-
brary science.

Margaret Ball

English
Concessions Manager
Western College; Indiana U., A.B.

Helen Ruth Berry

Business Education
Co-sponsor of Holcad
Butler U., B.S.

Paul Carmack

Social studies, public speaking
Co-sponsor of Hi-Y, debate coach
DePauw U., A.B.; Wabash College;
Indiana U.; Butler U., M.S.

Earl Chamberlain

Biology, health
Junior High principal
Indiana U., B.S., M.S.

Earl Chamberlain

Samantha Darst

Business Education
Sponsor of Holcad and Stenographers'
Club
Ball State, B.S.

Everett Daniels

Mathematics
Indiana State, M.S.

Helene Etter

English, history
Franklin College; Indiana U., A.B.,
M.S.; Denver U.; University of Wis-
consin.

Madeline Gullion

Mathematics
Dean of girls; senior class play coach;
N.Y.A. supervisor
Indiana U., A.B., A.M.; University of
Wisconsin.

Donalda Heminger

Art, industrial design
Ball State, B.S.; Boothbay Harbor
Studios; Columbia U., M.S.

Robert S. Hinshaw

Physical Education
Head Athletic Coach, sponsor of R Club
Earlham College, A.B.; University of
Illinois; University of Notre Dame;
Indiana U., M.S.

Roberta Howald

Vocational Home Economics
Indiana State, B.S.

Florence Madden

English
Rushlite business manager, senior
sponsor
Indiana U., A.B., A.M.; Columbia U.

Glen Maple

Science, mathematics
Co-sponsor of Hi-Y, sponsor of Aero-
nautics Club
Manchester College, A.B.

Josephine Maple

Physical Education
Indiana U.; DePauw U., A.B.

(No Pictures)

Dorothy Knoop

Vocational Home Economics
Indiana U., B.S.

Maurine Medsker

Business Education
Co-sponsor of Holcad
Sponsor of Stenographers' Club
Ward-Belmont College; University of
Wisconsin, B.A.; University of Ken-



Donald E. Myers

Music
Orpheus Club sponsor
Indiana State, B.S.

Esma MacGillivray

History, mathematics
Junior sponsor
Indiana U., A.B.; University of Wis-
consin; Purdue University.

Mary Parrish

English
Junior High chorus
Indiana U., A.B.; Gunnison College.

Beulah Phares

English, Latin
Sponsor of Language Club
Indiana U., A.B.; Ball State.

Ernest E. Privett

Agriculture, biology
F.F.A. sponsor
Purdue U., B.S.; Indiana U.

Cleon Reynolds

Safety, industrial arts
Assistant Athletic Coach
Indiana State Normal, A.B.

Mary Stultz

History, Spanish
Butler, A.B.

Rosemary Vandivier

Physical Education
Pep Advisory Committee sponsor
Purdue U., B.S.

Franklin Wade

History
Boys' Club sponsor
Manchester, B.S.

Omer Warneke

Mathematics, history
Cubs coach
Butler, B.S., M.S.